

# Northgate Terrace I

425 E. 19th St., Panama City, Fl. 32405  
(850)763-5522

[www.NorthgateTerrace1.com](http://www.NorthgateTerrace1.com)

Northgate Terrace I  
Apartments  
Are Suburban

Enjoy  
Unique  
Extras

Conveniently located and just minutes from:

- \* Panama City Mall
- \* Hospitals
- \* Community College
- \* Restaurants
- \* Gas Stations
- \* Grocery Stores

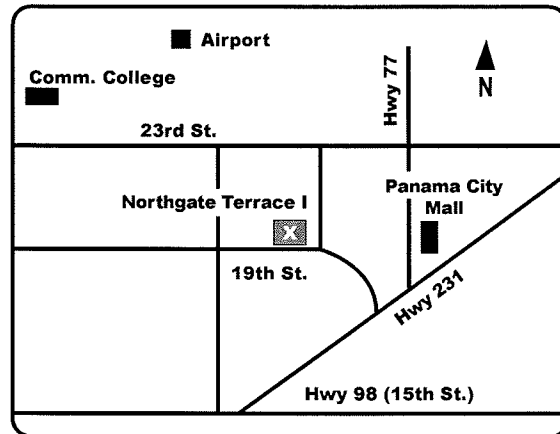
Northgate Terrace I  
Apartments  
Are Ideally Located

Northgate Terrace Apartments are within walking distance to the Mall (100 stores) and just minutes from Gulf Coast Comm. College and Florida State University.

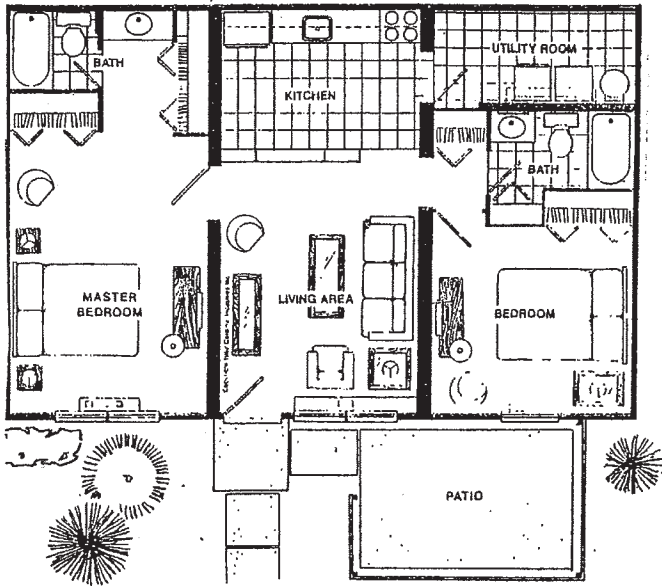
We are within a three mile radius from both public and private schools as well as churches of most denominations. Also, Northgate Terrace I is just minutes from St. Andrews Bay, which offers fishing and boating. Cross the Hathaway Bridge and enjoy the famous Panama City Beach. Here you will find beautiful green water on white sand beaches, the beach offers fine and fun dining, swimming, boating, parasailing, binglo, and much much more.

- + single story design-no one living above or below you
- + private entrance with no stairs to climb
- + floored & lighted attic storage
- + spacious linen, bedroom and guest closets
- + built-in floor to ceiling bookcase
- + Wall-Tex on every wall
- + 1 & 2 bedrooms apartment offer washer & dryer hookups
- + lovely landscaping-lots of trees
- + quiet double wall construction
- + private fenced patios

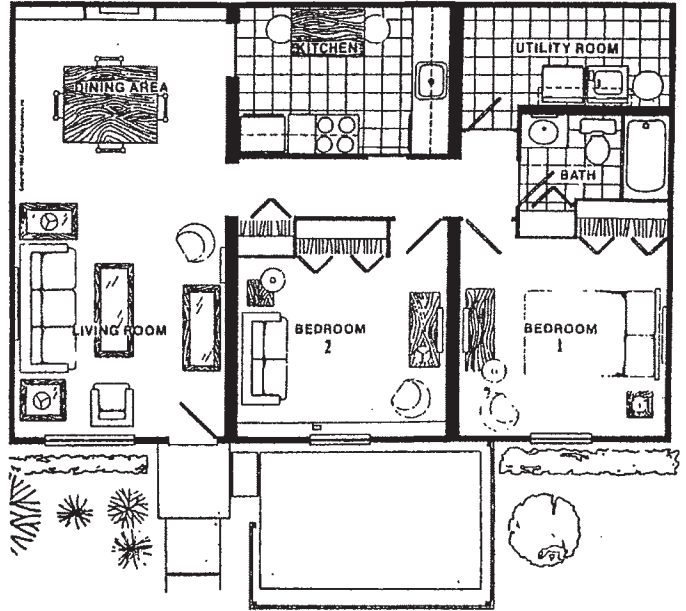
## HOW TO FIND US



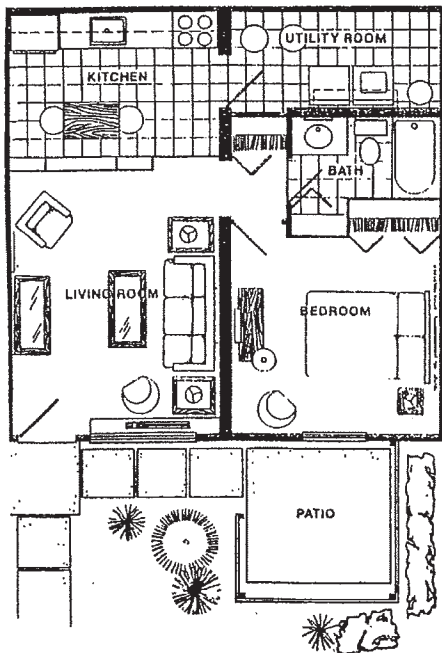
# The Good Life begins with a host of unique floor plans that make you feel at home



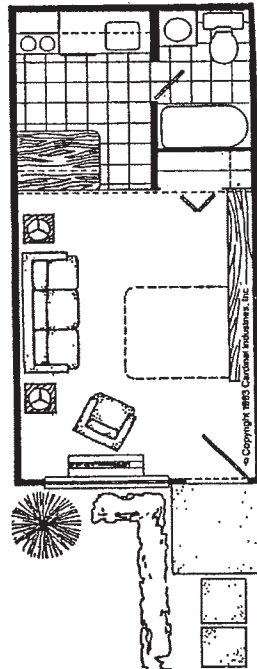
**2 Bedroom  
2 Bath**



**2 Bedroom  
1 Bath**



**1 Bedroom**



**Studio**

## RENTAL INFORMATION

Furnished Studios	\$ _____
Unfurnished One Bedroom	\$ _____
Unfurnished Two Bedroom	\$ _____
Unfurnished Two BR/2Bath	\$ _____
Security Deposit	\$ _____
Application Fee	\$ _____

\* Includes trash removal.

The above rental quotes are based on a one year lease, and are subject to change.

The convenience of a seven month lease increases the above rate by 20.00 per month.